

Trivia Question of the Week (Answer at the bottom): Walls that separate rooms are known as \_\_\_\_\_.

## Project: CW Hill Elementary and Middle School Week Ending: December 27, 2024

### THIS WEEK:

- Continued drywall installation level 2
- Continued waste and vent rough-in walls in the kitchen on level 1
- Continued plumbing rough-in at the kitchen
- Continued electrical rough-in overhead level 1, level 2 and in the kitchen
- Continued rough-in for electrical lighting
- Continued setting door frames for drywalls on level 2
- Continued setting door frames for masonry on level 2
- Continued framing restroom ceilings on level 2
- Continued VRF line sets in the kitchen



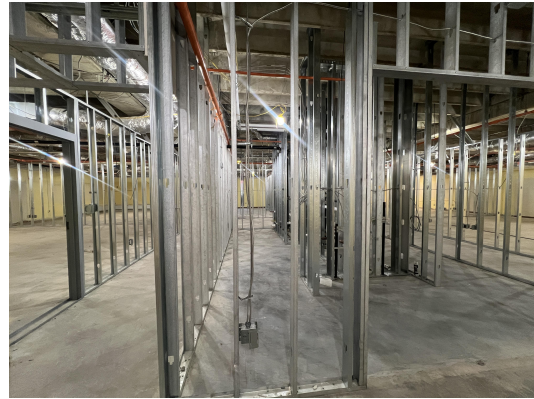
*Setting door frames for masonry on level 2.*



*Setting door frames in classrooms on level 2.*



*Concrete pads installed for electrical units on level 2.*



*Framing for classrooms and bathrooms on level 1.*

### **NEXT WEEK** – December 30th - January 3rd

- Continue drywall installation level 2
- Continue plumbing rough-in at the kitchen
- Continue electrical rough-in overhead level 1, level 2 and in the kitchen
- Continue framing restroom ceilings on level 2
- Continue VRF line sets in the kitchen
- Continue setting door frames on level 2
- Start hanging drywall level 1
- Continue waste and vent rough-in walls in the kitchen on level 1
- Continue rough-in for electrical lighting
- Continue setting door frames for drywalls on level 2
- Continue setting door frames for masonry on level 2
- Continue fire alarm rough-in
- Continue low voltage rough-in

### **Final Completion**

- June 30, 2025

### **PREPARED BY:**

Orisamola Richardson, Carroll Daniel Construction Co.

*Answer to the Trivia Question of the Week: **Partition Walls***